

## Real Estate

Navigating the UK real estate market can present many challenges; from the impact of Brexit to the socio-economic damage caused by the coronavirus pandemic. But with the right support and advice; investors, financiers and occupiers can assess the commercial viability of any real estate transaction.

Druces' commercial real estate expertise encompasses the most complex commercial property work and all the associated specialist advice, including construction, planning, finance and tax.

Our large and experienced team of residential real estate lawyers provides a complete property law service to a wide variety of clients, from those purchasing property in prime Central London locations, to international clients.

"The Druces property team are a pretty agile lot – responsive, accessible and armed with good commercial advice. Their legal knowledge is extensive but the focus is on practical solutions."

Legal 500, 2023

### Commercial Real Estate

- Commercial property transactions
- Commercial property developments
- Commercial property management
- Construction
- Planning and environment
- Real Estate dispute resolution
- Syndicated property investment
- Real Estate tax

### Residential Real Estate

- Residential property transactions
- Real Estate tax
- Real Estate dispute resolution
- Lease Extension and Enfranchisement
- Residential Conveyancing

### Key Contacts



Karen Chapman  
Head of Real Estate

T: +44 (0)20 7216 5591

E: [k.chapman@druces.com](mailto:k.chapman@druces.com)



Suzanne Middleton Lindsley  
Partner

T: +44 (0)20 7216 5555

E: [esml@druces.com](mailto:esml@druces.com)



Adrian Footer  
Partner

T: +44 (0)20 7216 5536

E: [a.footer@druces.com](mailto:a.footer@druces.com)



Parveen Abbas  
Partner

T: +44 (0)20 7216 5567

E: [p.abbas@druces.com](mailto:p.abbas@druces.com)

## Key Contacts



Benjamin Lomer  
Partner, Head of Property Litigation  
T: +44 (0)20 7216 5570  
E: [b.lomer@druces.com](mailto:b.lomer@druces.com)



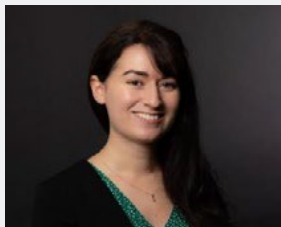
Michelle Goodrum  
Head of Enfranchisement  
T: +44 (0)20 3794 5972  
E: [m.goodrum@druces.com](mailto:m.goodrum@druces.com)



Katie Mear  
Senior Associate  
T: +44 (0)20 3974 5975  
E: [k.mear@druces.com](mailto:k.mear@druces.com)



Karen Jenkins  
Associate Legal Executive  
T: +44 (0)20 7216 5559  
E: [k.jenkins@druces.com](mailto:k.jenkins@druces.com)



Lisa Cardy  
Associate  
T: +44 (0)20 7216 5519  
E: [l.cardy@druces.com](mailto:l.cardy@druces.com)



Jacqueline D'Arcy  
Solicitor  
T: +44 (0)20 7216 5574  
E: [j.darcy@druces.com](mailto:j.darcy@druces.com)



Christopher Proudley  
Consultant, Planning  
T: +44 (0)20 7216 5542  
E: [c.proudley@druces.com](mailto:c.proudley@druces.com)



James Brand  
Consultant, Planning  
T: +44 (0)20 7216 5587  
E: [j.brand@druces.com](mailto:j.brand@druces.com)

## Our experience

### Commercial Property

- One of the largest Sharia 'a compliant banks in the UK on various property transactions.
- A London art auction house on the acquisition of a London headquarters for them to incorporate auction rooms and in connection with the letting of surplus space at some of the highest rents seen in the West End.

### Property Development

- Largest mixed-use development in the London Borough of Haringey since the 1940s.
- A sporting body on the redevelopment of numerous stands and other areas of its stadia, including advice on procurement, planning and media related issues.
- Acting for developers with regards to their central and west end London property redevelopments for new office, retail and high end residential projects

### Real Estate Finance

- A property investment company in the £25m refinancing of a portfolio of retail and business parks in the South of England.
- An Islamic bank on the £30m financing, through a Murabaha structure, of a large Midlands logistics hub.

### Residential Property

- Acting on acquisitions, disposals, leasehold enfranchisement, new builds and short term lettings together with associated tax planning and inheritance issues.

### Real Estate Tax

- Advising on the full range of property taxes, most commonly on ATED, VAT, Stamp Duty Land Tax (SDLT) and capital gains considerations, the Construction Industry Scheme and issues for Non-Resident Landlords.
- Considerable experience of lease financing structures, capital allowances planning, transactions for life companies and two Millennium Projects.
- Acted on the first ever REIT conversion to be listed on the Channel Islands Stock Exchange.

### Real Estate Dispute Resolution

- Dealing with all contentious property related issues including business tenancy renewals and terminations - often in a redevelopment context, dilapidations and repair issues, residential lease extensions and enfranchisement, general landlord and tenant disputes; and the associated Court and Tribunal proceedings or forms of Alternate Dispute Resolution.

### Property Syndication

- Pioneered investment in property by syndication for private investors some 30 years ago. We have advised over 100 syndicates in all matters relating to their investment.

## Key information about us:

- Established in 1767
- Office in the City of London
- International networks
- Partner-led services
- Heavyweight property team
- Corporate & Commercial specialists
- Strong banking practice, including trade finance and Sharia'a
- Experienced commercial litigators
- Leading private wealth, trusts and tax

"What makes Druces unique is that it takes the time to fully understand its client's situation and requirement."

Legal 500, 2023